



CI/SfB

Yt3

MAY 2025

(SUPERSEDES NOVEMBER 2022)

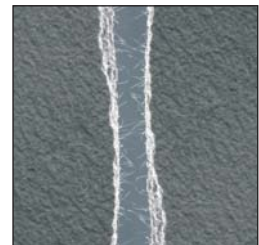
PRODUCT DATA SHEET

ARDEX X78 S

MICROTEC Flexible Ultra Rapid Setting Semi-Pourable Grey Floor Tile Adhesive

Features

- MICROTEC fibre reinforced for high performance
- Semi-pourable consistency ideal for solid bed fixing large format floor tiles
- Ultra rapid setting and hardening – walk on and grout after only 90 minutes
- Ideal for all tile types including porcelain, fully vitrified, mosaics and terrazzo
- High yield
- Suitable for floors with underfloor heating
- Ideal for swimming pools and wet areas
- For internal and external applications



Reg No. FM 01207

EMS 565427

OHS 628374

ARDEX UK LIMITED

Homefield Road, Haverhill, Suffolk CB9 8QP UK.

Telephone: +44 (0)1440 714939

Fax: +44 (0)1440 716640

Email: info@ardex.co.uk

ARDEX online: www.ardex.co.uk

ARDEX X 78 S

MICROTEC Flexible Ultra Rapid Setting Semi-Pourable Grey Floor Tile Adhesive

DESCRIPTION

ARDEX X 78 S grey is a MICROTEC fibre reinforced, ultra rapid setting cement-based floor tile adhesive which can be walked on and grouted after only 90 minutes. Specifically formulated to have enhanced properties of adhesion and flexibility, its unique semi-pourable consistency makes it for fixing large format floor tiles.

USE

ARDEX X 78 S is ideal for fixing fully vitrified or porcelain tiles, and other tiles with low porosity, as well as glass and porcelain mosaics and terrazzo. The BS EN 12004 C2 FE S1 designation for ARDEX X 78 S classifies the adhesives as 'Improved fast setting deformable cementitious adhesive with extended open time'.

The additional characteristics for ARDEX X 78 S determined in accordance with BS EN 12004 are a tensile adhesion strength of greater than 1 N/mm² adhesion value, greater than 1 N/mm² after water immersion, greater than 1 N/mm² after heat aging and greater than 1 N/mm² after freeze thaw cycling, making this product suitable for internal and external situations, including swimming pools.

The enhanced setting and hardening performance of ARDEX X 78 S means that after only 6 hours, the adhesive has already achieved the EN 12004 requirement of 0.5N/mm².

The mixed mortar has an easily workable, semi-pourable consistency to facilitate large format floor tile fixing. ARDEX X 78 S adheres strongly to most construction materials such as concrete, cement and sand screeds, heated sub-floors, anhydrite screeds, and existing ceramic tiled surfaces.

SURFACE PREPARATION

The backgrounds and surfaces to receive the tiles must be clean, firm, free of dust, dirt, oil, grease and other barriers to adhesion. Ensure that the background has adequate drying time, as given in the relevant part of BS 5385-3, prior to fixing the tiles.

Install tiles in accordance with the relevant parts of BS 5385 and BS 8000: Part 11 Workmanship on Building Sites. Backgrounds to receive ceramic tiles should be finished to Surface Regularity 1 i.e. so any gap under a 2m straight edge does not exceed 3mm.

ARDEX X 78 S can be applied to dry or moist surfaces, but moisture sensitive materials must be dry and remain dry after fixing. ARDEX WPC Waterproof Protection System can be used prior to tiling,

to create a waterproof protective coating that guarantees the prevention of water damage to floors and walls, by protecting moisture sensitive backgrounds in wet locations.

MIXING

ARDEX X 78 S powder is added to clean water in a clean container, whilst stirring and mixed thoroughly to give a semi-pourable, easily worked mortar. The use of an ARDEX mixing paddle with a 10mm chuck, variable speed, electric drill makes light work of mixing.

The mix proportions by volume are approximately: 2³/₄ parts ARDEX X 78 S powder : 1 part water.

A 20kg bag of ARDEX X 78 S requires up to 7.0 litres of water. DO NOT EXCEED the maximum of 7.0 litres of water per 20kg bag of ARDEX X 78 S.

The consistency of the adhesives can be adjusted to suit site conditions and the materials being fixed. The mortar should be applied at temperatures above 5°C.

The pot life of the mixed mortar is approximately 30 minutes at 20°C.

APPLICATION

The mixed mortar is applied to the prepared surface with a trowel and then combed through with a suitably sized notched trowel in straight ribs to give a ribbed mortar bed. The tiles should be fixed within the open time of the applied adhesive and pressed into place with a twisting and sliding action ensuring solid bed fixing is achieved.

ARDEX X 78 S has an open time of up to 30 minutes with freshly mixed material, when used in accordance with BS EN 12004. For optimum performance, tiles should be fixed within 20 minutes and can be adjusted for up to 15 minutes at 20°C.

GROUTING

Grouting can proceed once the tile bed has hardened sufficiently so that the tiles will not be dislodged. When grouting floor tiles, ARDEX X 78 S is normally hard enough after 90 minutes at 20°C to accept foot traffic depending on the porosity of the tile and the background. Higher temperatures will shorten, and lower temperatures will lengthen these times. The tile joints should be grouted with the appropriate ARDEX-FLEX Tile Grout, or the appropriate ARDEX Epoxy Grout for areas where chemical resistance and hygienic joints are required i.e. commercial food and preparation areas.

ARDEX X 78 S

MICROTEC Flexible Ultra Rapid Setting Semi-Pourable Grey Floor Tile Adhesive

COVERAGE

A 20kg bag of ARDEX X 78 S will yield approximately 16.5 litres of mortar, using approximately 1.2kg of powder per m² per mm thickness of adhesive bed. The actual coverage achieved in practice will depend on the back profile of the tile and notched trowel and technique used to bed the tiles e.g. a 20kg bag of ARDEX X 78 S will cover approximately 9.4m² when using a 5mm x 5mm square toothed and notched trowel.

PRIMERS

ARDEX P 51

Concentrated Water-Based Primer and Bonding Agent for use on absorbent backgrounds, concrete and anhydrite/calcium sulfate screeds prior to the use of ARDEX X 78 S adhesive. Dilute ARDEX P 51 1:3 with water.

ARDEX P 4

Ready Mixed, Multipurpose, Rapid Drying Primer for use on ceramic and porcelain tiles, concrete and terrazzo. ARDEX P 4 Primer is solvent free and dries after 30 minutes. It is suitable for use in dry, damp or wet (not submerged) internal and external locations.

ARDEX P 82

Non-flammable, Water-Based, Synthetic Primer for use in dry areas on, smooth impervious surfaces including existing ceramic tiling, internal asphalt, terrazzo, sound and well adhered paint coatings and old adhesive residues, prior to the use of ARDEX X 78 S.

GUIDANCE NOTES ON BACKGROUNDS TO BE TILED

Concrete

Allow at least 6 weeks, preferably at least 12 weeks drying time prior to fixing tiles onto new concrete. Mechanically prepare concrete and ensure mould oil and curing agents are removed.

Cement/sand screed

Wood float finish and prevent rapid drying of the surface for 7 days. Allow to air dry for at least 3 weeks prior to tiling.

Note for Screeds:

With an ARDEX A 38 cement/sand screed, tiles can be fixed after only 4 hours.

Wood-based sheets and boards

NOTE: As of May 2024 Plywood/Timber is not a suitable base for tiling directly to on walls or floors
- BS 5385 -3: 2024

Option 1 - Overlay with a suitable tilebacker board of appropriate thickness and fixed as per manufacturers instructions.

Option 2 - An uncoupling matting such as ARDEX Flexbone VA/2E* can be selected providing that the plywood/timber floor is:

- the correct grade
- sufficiently dry, rigid and stable
- able to carry all anticipated static and dynamic loads without deflection
- have adequate ventilation below
- flat and level (SR1)
- securely fixed (screwed to joists at 300mm centres, including any cross-noggins, if necessary)

When installing bonded uncoupling mattings down to the surface of the timber with AF 200 Plus*, it should be prepared to receive the adhesive. Sanding of the timber surface may be required to ensure any surface coatings are removed, e.g. varnish, lacquers, etc. *Refer to the relevant product data sheet for further advice.

Painted surfaces

ARDEX's advice is always to remove the painted finish to reveal a sound substrate without barriers to adhesion. Where the contractor deems the painted finish as sound, it should be primed with ARDEX P 82 primer before tiling with ARDEX X 78 S commences. A trial application is recommended first. Internal, dry areas only.

Calcium Sulfate-based screeds i.e. Anhydrite

Ensure they have been laid and prepared in accordance with the manufacturers recommendations. Generally they require sanding and must have a moisture content of 0.5% or less measured using the carbide method. Prime with ARDEX P 51, diluted with 3 parts of water.

Existing glazed ceramic tiling

Ensure existing tiling is well adhered and can support the new tile bed. Thorough cleaning and rinsing off is essential. Prime tiles with ARDEX P 82 (Internal dry areas only), or ARDEX P 4 (internal and external locations).

Asphalt sanded

With well adhered sand key no primer is required. Internal areas only. If sand key is poor or worn off, proceed as for smooth asphalt.

Asphalt smooth

Priming with ARDEX P 82 recommended. Internal dry areas.

Underfloor heating

ARDEX X 78 S is suitable for fixing ceramic tiles to concrete or cement and sand screeds with fully commissioned underfloor heating.

PACKAGING

ARDEX X 78 S is packed in paper sacks incorporating a polyethylene liner - net weight 20kg.

ARDEX X 78 S

MICROTEC Flexible Ultra Rapid Setting Semi-Pourable Grey Floor Tile Adhesive

STORAGE AND SHELF LIFE

ARDEX X 78 S contains a reducing agent to control the level of Chromium VI when mixed prior to use. ARDEX X 78 S must be stored in unopened packaging, clear of the ground in cool dry conditions and protected from excessive draught. If stored correctly, as detailed above, and used within 6 months of the date shown on the packaging, the activity of the reducing agent (added to control the level of soluble Chromium VI) will be maintained and this product will contain, when mixed with water, no more than 0.0002% (2ppm) soluble Chromium VI of the total dry weight of the cement content of this product. Use of the product after the end of the declared storage period may increase the risk of allergic reaction.

ARDEX X 78 S must not be used after the end of the declared storage period.

PRECAUTIONS

ARDEX X 78 S contains more than 20% portland cement and, therefore, in line with current legislation, is classified as irritating to eyes and skin. For this reason the following precautions should be

observed:-

Avoid contact with skin and eyes; in case of contact with the eyes, rinse immediately with plenty of water and seek medical advice; wear suitable gloves and keep the product out of the reach of children. Avoid generation of airborne dust during mixing.



TECHNICAL DATA

Bulk density of powder	approximately 1.2kg/litre
Weight of fresh mortar	approximately 1.6kg/litre
Working time (20°C)	approximately 30 minutes
Pot life:	30 minutes
Fixing time (20°C)	approximately 30 minutes
Adjusting time (20°C)	approximately 15 minutes
Tensile adhesion strength	greater than 1 N/mm ²

PROPERTIES TESTED TO BS EN 12004

Open Time: approximately 30 minutes

Tensile Adhesion Strength:

At least 0.5N/mm² at 6 hours

PROPERTIES TESTED TO BS EN 12004

Transverse Deformation: Classification S1
(Deformation greater than or equal to 2.5mm and less than 5mm)

NOTE: For the latest technical or health and safety data on this product, consult the current technical or health and safety data sheet online at www.ardex.co.uk

ARDEX GROUP WARRANTY

ARDEX Group supplies products under a range of Brands into the UK and Ireland markets. This Warranty applies to BAL, ARDEX, Gutjahr, Wakol, Loba, wedi or Knopp products whether used individually or in combination provided they are used in accordance with the relevant product datasheets and the warranty terms and conditions are available on the website. This Warranty applies only to Products purchased and used in the UK and Ireland directly from one of the Brands or a Brand authorised stockist.

NOTE: The information supplied in our literature or given by our employees is based upon extensive experience and, together with that supplied by our agents or distributors, is given in good faith in order to help you. Our Company policy is one of continuous Research and Development; we therefore reserve the right to update this information at any time without prior notice. We also guarantee the consistent high quality of our products; however, as we have no control over site conditions or the execution of the work, we accept no liability for any loss or damage which may arise as a result thereof.

Country specific recommendations, depending on local standards, codes of practice, building regulations or industry guidelines, may affect specific installation recommendations.

TECHNICAL ADVICE HELPLINE
01440 714939

ARDEX online: www.ardex.co.uk