



CI/SfB

(43) Yq2

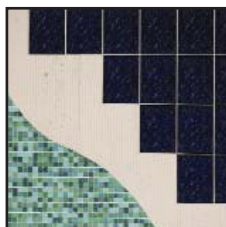
MARCH 2012
PRODUCT DATA SHEET

ARDEX D 20

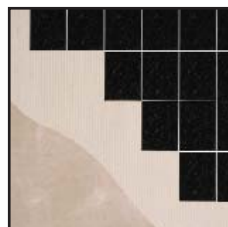
Ready Mixed Wall Tile Adhesive

Features

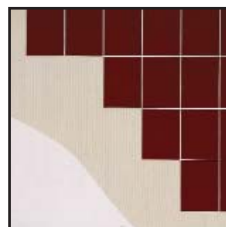
- Ideal for use in kitchens, bathrooms and domestic showers
- No primer required – save time and money
- Up to 20 minutes open time
- Up to 40 minutes tile adjustability
- Excellent adhesion
- Suitable for all tile types including porcelain
- Non-slip and easy to use



D 20 tiling
on tiles



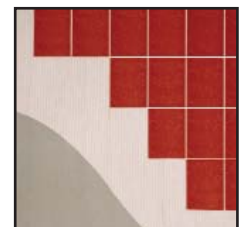
D 20 tiling
on plaster



D 20 tiling on
plaster board



D 20 tiling
on timber



D 20 tiling
on rendering



Reg No. FM 1207



EMS 565427

ARDEX UK LIMITED
Homefield Road, Haverhill, Suffolk CB9 8QP UK.
Telephone: +44 (0)1440 714939
Fax: +44 (0)1440 716640
Technical Services Fax: +44 (0)1440 716663
Email: technical.services@ardex.co.uk
ARDEX online: www.ardex.co.uk

ARDEX D 20

Ready Mixed Wall Tile Adhesive

DESCRIPTION

ARDEX D 20 is an easy to apply, ready mixed wall tile adhesive with excellent slump resistant properties.

USE

ARDEX D 20 is for fixing ceramic tiles and mosaics to gypsum plaster, paper faced plasterboards, concrete, cement and sand renders, rigidly braced and stable sheets and boards, e.g. plywood, chipboard, fibre building boards and other absorbent backgrounds, as well as fixing porous tiles to existing ceramic tiling. Suitable for use in dry internal locations, as well as in domestic showers and bathrooms on appropriate backgrounds where there is ample time for the tiling to dry out between periods of use.

PREPARATION

Ensure that the substrate is sound, sufficiently mature, dry and free of dust, dirt, oil, grease and other surface contamination that will impair adhesion. Use ARDEX DGR degreaser to remove oil, wax, grease etc. Paint coatings, whitewash and other friable materials should be removed.

APPLICATION

ARDEX D 20 adhesive is applied to the wall with a trowel, pressing the adhesive into the surface and trowelling out to give a uniform coating on the area being tiled and then combed through with a notched trowel to give a straight ribbed adhesive bed into which the ceramic tiles are bedded. For fixing porcelain tiles larger than 150mm x 150mm or porous backed tiles greater than 300mm x 300mm use the appropriate ARDEX cement based adhesive.

One or both of the surfaces being adhered together must be porous and absorbent.

When fixing non-porous tiles such as porcelain or vitrified tiles onto non-absorbent backgrounds use the appropriate ARDEX cement based adhesive.

Apply only sufficient adhesive to the surface to cover an area that can be tiled within 20 minutes. This area will depend on the absorbency of the substrate and site conditions (temperature and humidity). The high initial grab of ARDEX D 20 is such that battens and spacers are generally not required.

In intermittently wet areas the adhesive coverage should be checked occasionally to ensure that a solid bed of adhesive is

achieved which may require buttering of the tile back immediately prior to fixing.

NOTE: The maximum weight of tiling per square metre on gypsum plaster is 20kg and for plasterboard it is 32kg.

New plasterwork should have been completed for at least 4 weeks and should be dry throughout prior to fixing ceramic tiles. Finish plaster should be specified and applied to provide a sound, matt finish. If over-trowelling of the plaster surface has produced a smooth, shiny or dusty finish, this must be removed by wire brushing to leave a clean, sound and dust free surface prior to tiling.

Plaster surfaces that are dry and firm can be tiled directly with ARDEX D 20 but in all cases the plaster must be of sufficient strength to carry the weight of the tiling. Allow render to air dry for at least 2 weeks prior to tiling.

In frequently used showers or power showers, the surface should initially be treated with ARDEX WPC Rapid Setting Waterproof Coating before the wall tiles are fixed to prevent ingress of moisture into the background. Porous bodied tiles can be fixed in such areas using ARDEX D 30 Commercial and Domestic Ready Mixed Wall Tile Adhesive. In permanently wet locations e.g. swimming pools and external locations, use the appropriate ARDEX cement based adhesive such as ARDEX X 77 MICROTEC Flexible Wall and Floor Tile Adhesive.

GROUTING

Grout the tiles when the ARDEX D 20 has hardened, a minimum of 24 hours after fixing. We recommend the use of an appropriate ARDEX –FLEX cement-based grout for general tiling. Allow up to 3 days before grouting when fixing on impervious or non-porous backgrounds.

Movement joints should be incorporated as advised in BS 5385-1

- Over existing and/or structural movement joints.
- Where the tiling abuts other materials.
- Where tiling is continuous across junctions of different background materials.
- In large tiled areas, at internal vertical corners and at 3m to 4.5m centres horizontally and vertically.
- Where stresses are likely to be concentrated, for example at changes of alignment.

COVERAGE

Approximately: 1 litre per m² using a 3mm x 3mm toothed and notched trowel.

PACKAGING

ARDEX D 20 is packed in plastic tubs - 10 litres and 5 litres net volume.

STORAGE AND SHELF LIFE

Store out of direct sunlight. Protect from freezing. ARDEX D 20 has a storage life not less than 12 months if stored in original unopened containers.

PRECAUTIONS

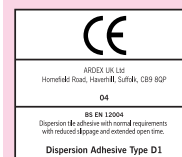
ARDEX D 20 is non-hazardous in normal usage, however, good hygiene practices should be followed. Avoid contact with the skin, wash off with soap and water before drying takes place. In case of contact with eyes, rinse carefully and thoroughly with water and seek medical advice. In case of ingestion seek medical help. For further information consult the relevant health and safety data sheet.

TECHNICAL DATA

Paste colour:	Off white
Adhesive bed thickness:	Maximum 3mm
Drying time:	24 hours

PROPERTIES TESTED

Slump Resistance (BS EN 1308):	Slip - less than 0.5mm
Shear Adhesion Strength (BS EN 1304):	Initial shear strength: Not less than 0.5 N/mm ²



NOTE: The information supplied in our literature or given by our employees is based upon extensive experience and, together with that supplied by our agents or distributors, is given in good faith in order to help you. Our Company policy is one of continuous Research and Development; we therefore reserve the right to update this information at any time without prior notice. We also guarantee the consistent high quality of our products; however, as we have no control over site conditions or the execution of the work, we accept no liability for any loss or damage which may arise as a result thereof.

Country specific recommendations, depending on local standards, codes of practice, building regulations or industry guidelines, may affect specific installation recommendations.

TECHNICAL ADVICE HELPLINE:
01440 714939
ARDEX online: www.ardex.co.uk